

## NZ PRYDA FIX

A non-tear economical fixing for foil insulation and shade cloth.

### FEATURES AND BENEFITS

**FAST:** A simple and economical method of fixing building foil insulation to timber framing, roof insulation to trusses or rafters, enables quick and efficient installation of netting on privacy screens, and shade clothes to timber framing. It holds the insulation foil securely and prevents tearing.

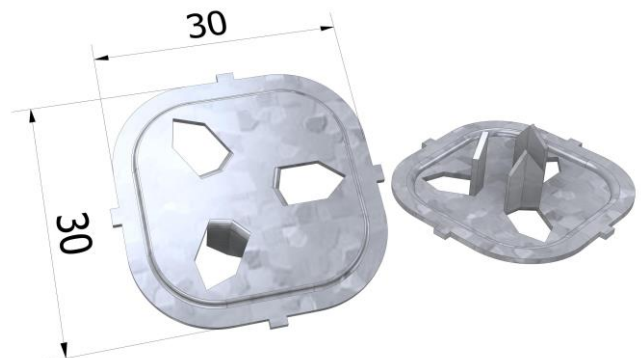
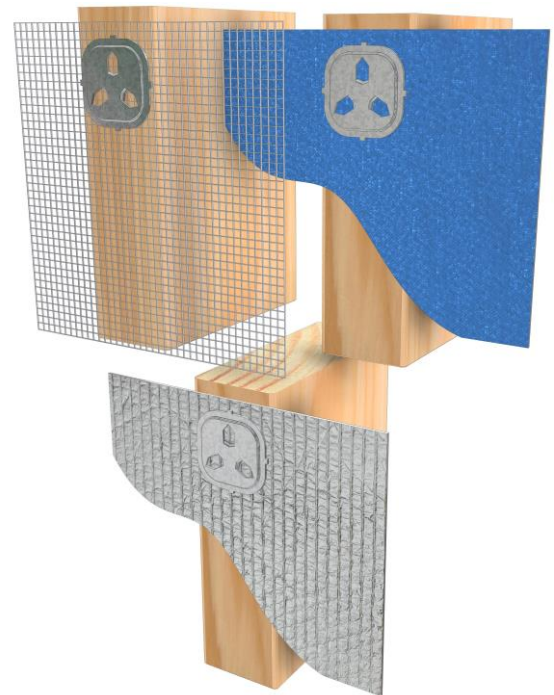
**FAST:** Fixed with pre-punched nails. No additional fasteners required.

**DURABLE:** Made from G300 Z275 Steel.

### SPECIFICATIONS

<b>PRODUCT CODE</b>	SFI
<b>STEEL</b>	G300
<b>FASTENER SIZE</b>	Nil Pre-punched nails
<b>CORROSION RESISTANCE</b>	Z275

At the time of print, this product is NOT subject to any known warnings and bans found in Building Act 2004.



\*All dimensions shown in "mm".

## DESIGN CAPACITIES

LOADING	TIMBER	LIMIT STATE DESIGN CAPACITY $\phi_{NJ}$ (KN)
Pryda Fix Pull-Out	Radiata Pine	0.085
	Hardwood	0.17
Shade cloth tearing (Shear)	Radiata Pine or Hardwood	0.26

**Note:**

1.Design capacities applies for dry (maximum moisture content of 18%) Radiata Pine and Douglas Fir timber grade SG8 and for timber which meets J5 timber in accordance with NZS3604.

## APPLICATION AND SCOPE OF USE

Pryda Fix is certified when used and installed in accordance with the product datasheet shown connection details. Pryda fasteners approved for the installation form an integral part of the connection and therefore should be used with all Pryda products installation unless otherwise approved by a certified structural Engineer. Only use the product for its intended applications and the selected product material type within the specified environmental condition as outlined in NZS 3604:2011 Table 4.1. (Refer to Durability section for more details). Fastener material type shall match the selected Pryda product. i.e., Galvanised fasteners with galvanised products. Stainless Steel fasteners with stainless steel products.

### WALL INSULATION

Pryda Fix is a simple and economical method of fixing building foil insulation to timber framing. It holds the insulation foil securely and prevents tearing. Recommended fixing spacing is 600 mm.

### ROOF INSULATION

Pryda Fix may be used for fixing insulation foil in roof construction. Again, it holds the insulation foil securely and prevents tearing due to the rounded corners of the product. Recommended fixing spacing is 600 mm.

### PRIVACY SCREENS

Pryda Fix enables quick and efficient installation of netting on privacy screens. Recommended fixing spacing is 400 mm.

### SHADE CLOTH

Pryda Fix also facilitates fixing of shade cloth onto timber pergolas or other framework, eliminating the need for battens to hold the shade cloth in position. Recommended fixing spacing is 400 mm.

### HOT HOUSE COVERING

Pryda Fix is also suited to fixing sheet p.v.c. onto hot houses for both domestic and commercial use. Pryda Fix prevents tearing of the sheeting.

## DURABILITY

The following table provides an easy guide when selecting a Pryda product corrosion protection finish that will meet and exceeds NZS 3604:2011 Table 4.1.

Pryda Fix is only available in Z275, therefore suitable for “Closed” environment.

ZONE	LOCATION		ENVIRONMENT	PRODUCT
All Zones	Fully enclosed walls, floors, and roof spaces		Closed	Pryda Zinc Coated Products Z275
Zones B and C	All subfloor fastenings more than 600mm above the ground	Vented 7000mm <sup>2</sup> /m <sup>2</sup> or LESS	Sheltered	Pryda Stainless Steel 304 Products <sup>(3)</sup>
		Vented MORE than 7000mm <sup>2</sup> /m <sup>2</sup>	Exposed	Pryda Stainless Steel 304 Products <sup>(3)</sup>
	All subfloor fastenings within 600mm of the ground	Sheltered and Exposed		Pryda Stainless Steel 304 Products <sup>(3)</sup>
	All other structural fixings	Sheltered		Pryda Stainless Steel 304 Products <sup>(3)</sup>
Exposed		Pryda Stainless Steel 304 Products <sup>(3)</sup>		
Zone D	All structural fixings	Sheltered and Exposed		Pryda Stainless Steel 304 Products <sup>(3)</sup>

Notes:

- 1.All Pryda galvanised products comply with NZS3604:2011 Table 4.2.
- 2.Refer to NZS3604:2011 for all environment definitions and Table 4.3 for nails or screw galvanizing.
- 3.Routine inspection and cleaning using soap and fresh warm water is an integral part of the ongoing care and maintenance of stainless steel to preserve its appearance.

## STORAGE AND HANDLING

Prior to use, the Pryda products shall be stored in a weatherproof environment and protected from moisture. Care must be taken to avoid any damage to the surface of the product protective galvanised coating and profile that may impact the performance.

## COMPLIES WITH THE FOLLOWING PROVISIONS OF THE NEW ZEALAND BUILDING CODE (NZBC)

**Clause B1 STRUCTURE:** Performance B1.3.1, B1.3.2 and B1.3.4. Loads arising from self-weight, imposed gravity loads arising from use, earthquake, snow, and wind. (i.e., B1.3.3 (a), (b), (f), (g), and (h)). Only some may apply for a specific use of the component.

**Clause B2 DURABILITY:** Performance B2.3.1 (a) not less than 50 years and B2.3.2.

**Clause F2 HAZARDOUS BUILDING MATERIALS:** Performance F2.3.1.

# INSTALLATION

## STEP 1



- Position foil and align foil corners with timber frame.
- Place Pryda fix at corner leaving a 10mm edge distance to both edges.
- Firmly press Pryda fix against frame or lightly hammer in, temporarily securing the foil and partially embedding the Pryda fix into timber.
- Carefully hammer in the Pryda fix evenly with moderate force until all pre-punched claw-nails are fully embedded and Pryda fix is sitting flat against foil and frame.

### Contact details

Manufacture location	Overseas
Legal and trading name of manufacturer	Exim Engineering Pty Ltd
Legal and trading name of importer	Pryda New Zealand -a Division of ITW New Zealand
Importer address for service	23-29 Poland Road, Wairau Valley, Auckland, 0627, New Zealand
Importer website	Pryda.co.nz
Importer email	info@prydaanz.com
Importer phone number	0800 88 22 44
Importer NZBN	9429039833129