

## STRUCTURAL BRACKETS RANGE

Extensive structural brackets range specifically designed and fabricated from high grade materials for use in all types of reliable connection methods.

### FEATURES AND BENEFITS

**SIMPLE:** Extensive range to suit most types of common site connections.

**FAST:** Bolt fix using standard on site tools

**DURABLE:** 5mm thick HDG galvanised steel. \*Excludes FBKFS

### SPECIFICATIONS

PRODUCT CODE	SBK*
STEEL	G300
THICKNESS	5mm*
CORROSION RESISTANCE	Electroplated or Hot Dipped Galvanised
FASTENERS REQUIRED	Bolt Fix*
HEIGHT	Refer to specific bracket
WIDTH	Refer to specific bracket

\*Refer to specific product for code and fixing methods

\*SBKFS is only 3mm thick.

**NOTE:** The product marked with \* is no longer available

At the time of print, this product is NOT subject to any known warnings and bans found in Building Act 2004.



## DURABILITY

The following table provides an easy guide when selecting a Pryda product corrosion protection finish that will meet and exceeds NZS 3604:2011 table 4.1.

ZONE	LOCATION		Environment	Product
All Zones	Fully enclosed walls, floors, and roof spaces		Closed	Pryda Zinc Coated Products Z275
Zones B and C	All subfloor fastenings more than 600mm above the ground	Vented 7000mm <sup>2</sup> /m <sup>2</sup> or LESS	Sheltered	Pryda Stainless Steel 304 Products <sup>(3)</sup>
		Vented MORE than 7000mm <sup>2</sup> /m <sup>2</sup>	Exposed	Pryda Stainless Steel 304 Products <sup>(3)</sup>
	All subfloor fastenings within 600mm of the ground	Sheltered and Exposed		Pryda Stainless Steel 304 Products <sup>(3)</sup>
	All other structural fixings	Sheltered		Pryda Stainless Steel 304 Products <sup>(3)</sup>
		Exposed		Pryda Stainless Steel 304 Products <sup>(3)</sup>
Zone D	All structural fixings	Sheltered and Exposed		Pryda Stainless Steel 304 Products <sup>(3)</sup>

Notes:

1.All Pryda galvanised products comply with NZS3604:2011 Table 4.2.

2.Refer to NZS3604:2011 for all environment definitions.

3.Routine inspection and cleaning using soap and fresh warm water is an integral part of the ongoing care and maintenance of stainless steel to preserve its appearance.

## STORAGE AND HANDLING

Prior to use, the Pryda products shall be stored in a weatherproof environment and protected from moisture. Care must be taken to avoid any damage to the surface of the product protective galvanised coating and profile that may impact the performance.

## COMPLIES WITH THE FOLLOWING PROVISIONS OF THE NEW ZEALAND BUILDING CODE (NZBC)

**Clause B1 STRUCTURE:** Performance B1.3.1, B1.3.2 and B1.3.4. Loads arising from self-weight, imposed gravity loads arising from use, earthquake, snow, and wind. (i.e., B1.3.3 (a), (b), (f), (g), and (h)). Only some may apply for a specific use of the component.

**Clause B2 DURABILITY:** Performance B2.3.1 (a) not less than 50 years and B2.3.2.

**Clause F2 HAZARDOUS BUILDING MATERIALS:** Performance F2.3.1.

## DESIGN CAPACITIES

Pryda SBK structural bracket are supplied as individually described with product dimensions, hole geometry, and fabrication material specifics.

Design capacities can be derived from:

- Engineering first principles by the user/purchaser consulting project Engineer for each component and its intended design.
- The characteristic strength of bolts in timber or steel, using the relevant design code for the intended load directions based on the connection geometry and selected components.

Before use, the end user/purchaser is responsible for checking the suitability and seeking Engineering advice from his/her consulting project structural Engineer for any selected components and deem the components "fit for purpose" for its intended use.

# AVAILABLE STRUCTURAL BRACKET RANGE

## FLAT STRAPS



SBK 23  
SBK 23/S



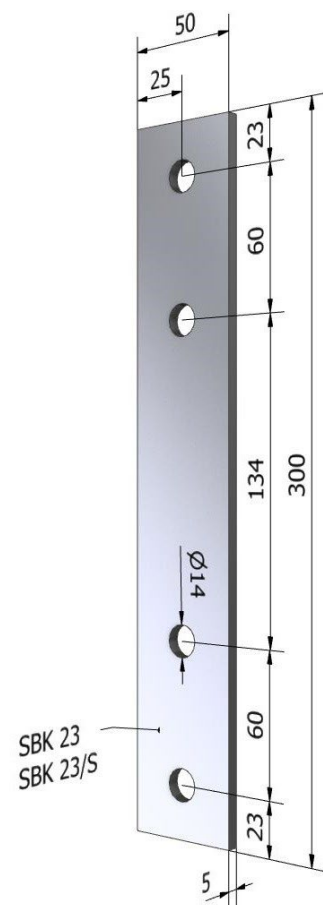
SBK 25  
SBK 25/S

### SBK23

STEEL GRADE:	Grade 250
STEEL THICKNESS:	5mm
CORROSION PROTECTION:	HDG to AS/NZS 4680
FASTENER SIZE:	M12 BOLT OR SIMILAR

### SBK23/S

STEEL GRADE:	Stainless Steel 304
STEEL THICKNESS:	5mm
CORROSION PROTECTION:	Stainless Steel
FASTENER SIZE:	M12 BOLT OR SIMILAR



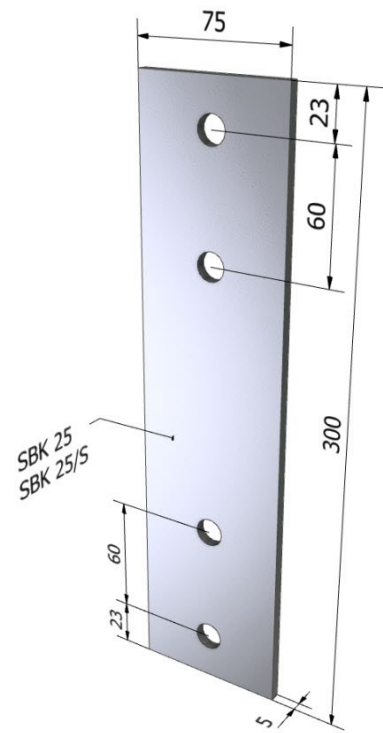
\*All dimensions shown are in "mm".

## SBK25

STEEL GRADE:	Grade 250
STEEL THICKNESS:	5mm
CORROSION PROTECTION:	HDG to AS/NZS 4680
FASTENER SIZE:	M12 BOLT OR SIMILAR

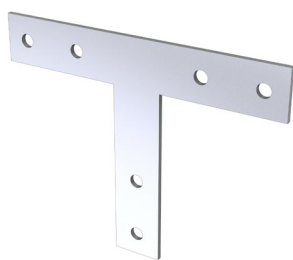
## SBK25/S

STEEL GRADE:	Stainless Steel 304
STEEL THICKNESS:	5mm
CORROSION PROTECTION:	Stainless Steel
FASTENER SIZE:	M12 BOLT OR SIMILAR



\*All dimensions shown are in "mm".

## FLAT T-STRAPS



SBK 27  
SBK 27/S



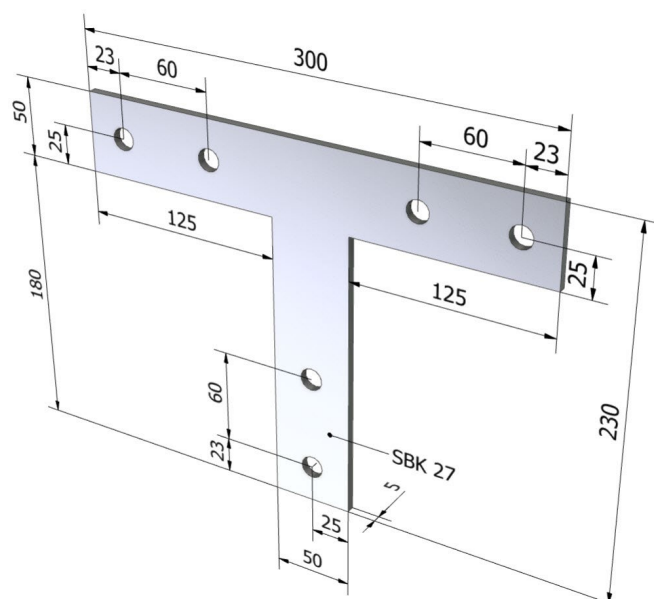
SBK 28/S\*

### SBK27

STEEL GRADE:	Grade 250
STEEL THICKNESS:	5mm
CORROSION PROTECTION:	HDG to AS/NZS 4680
FASTENER SIZE:	M12 BOLT OR SIMILAR

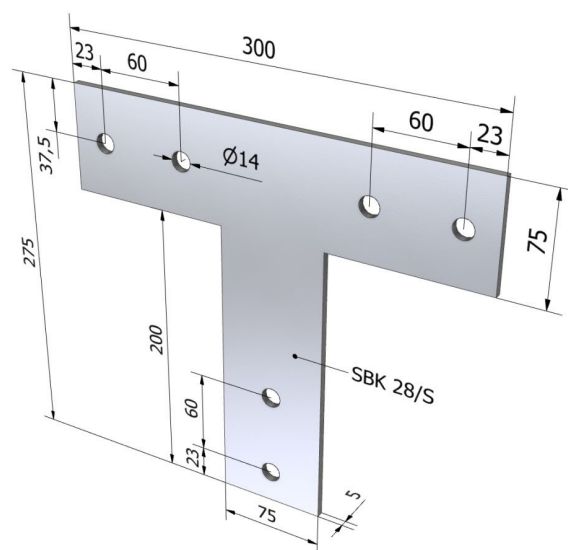
### SBK27/S

STEEL GRADE:	Stainless Steel 304
STEEL THICKNESS:	5mm
CORROSION PROTECTION:	Stainless Steel
FASTENER SIZE:	M12 BOLT OR SIMILAR



### SBK28/S\*

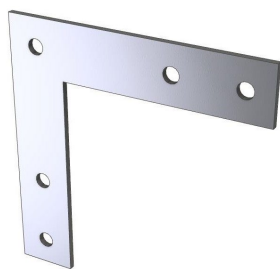
STEEL GRADE:	Stainless Steel 304
STEEL THICKNESS:	5mm
CORROSION PROTECTION:	Stainless Steel
FASTENER SIZE:	M12 BOLT OR SIMILAR



NOTE: The product marked with \* is no longer available

\*All dimensions shown are in "mm".

## FLAT L-STRAPS



SBK 29  
SBK 29/S



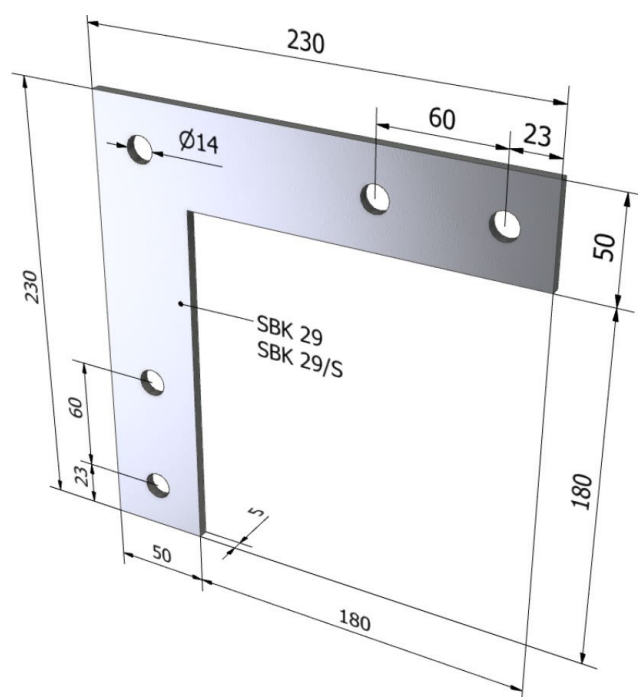
SBK 30

### SBK29

STEEL GRADE:	Grade 250
STEEL THICKNESS:	5mm
CORROSION PROTECTION:	HDG to AS/NZS 4680
FASTENER SIZE:	M12 BOLT OR SIMILAR

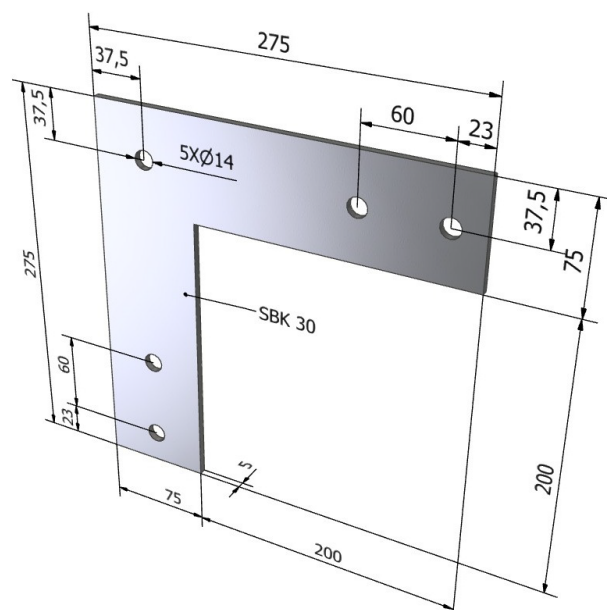
### SBK29/S

STEEL GRADE:	Stainless Steel 304
STEEL THICKNESS:	5mm
CORROSION PROTECTION:	Stainless Steel
FASTENER SIZE:	M12 BOLT OR SIMILAR



### SBK30

STEEL GRADE:	Grade 250
STEEL THICKNESS:	5mm
CORROSION PROTECTION:	HDG to AS/NZS 4680
FASTENER SIZE:	M12 BOLT OR SIMILAR



\*All dimensions shown are in "mm".

## ANGLE BRACKETS



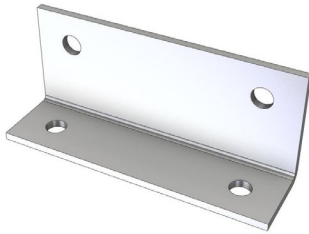
SBK 10A\*  
SBK 10A/S\*



SBK 14A\*  
SBK 14A/S\*



SBK 31\*  
SBK 31/S\*



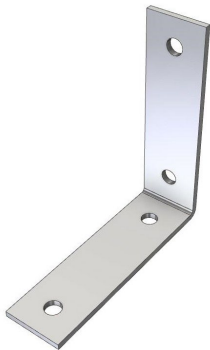
SBK 31A\*  
SBK 31A/S\*



SBK 33\*  
SBK 33/S\*



SBK 34\*



SBK 53\*  
SBK 53/S\*

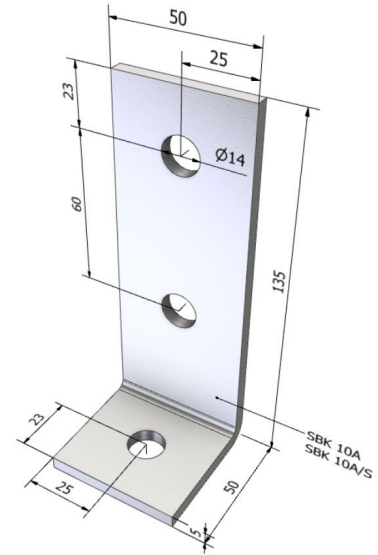
NOTE: The product marked with \* is no longer available

**SBK10A\***

STEEL GRADE:	Grade 250
STEEL THICKNESS:	5mm
CORROSION PROTECTION:	HDG to AS/NZS 4680
FASTENER SIZE:	M12 BOLT OR SIMILAR

**SBK10A/S\***

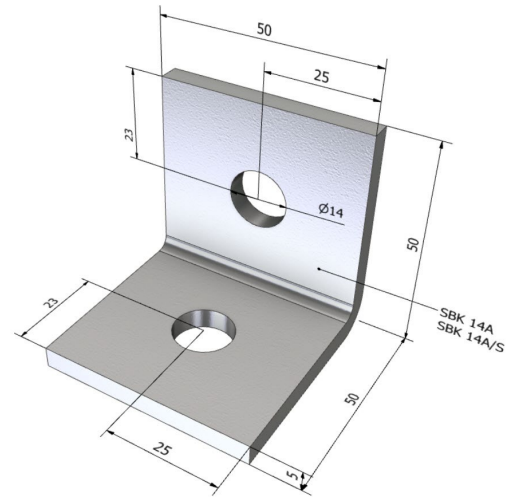
STEEL GRADE:	Stainless Steel 304
STEEL THICKNESS:	5mm
CORROSION PROTECTION:	Stainless Steel
FASTENER SIZE:	M12 BOLT OR SIMILAR

**SBK14A\***

STEEL GRADE:	Grade 250
STEEL THICKNESS:	5mm
CORROSION PROTECTION:	HDG to AS/NZS 4680
FASTENER SIZE:	M12 BOLT OR SIMILAR

**SBK14A/S\***

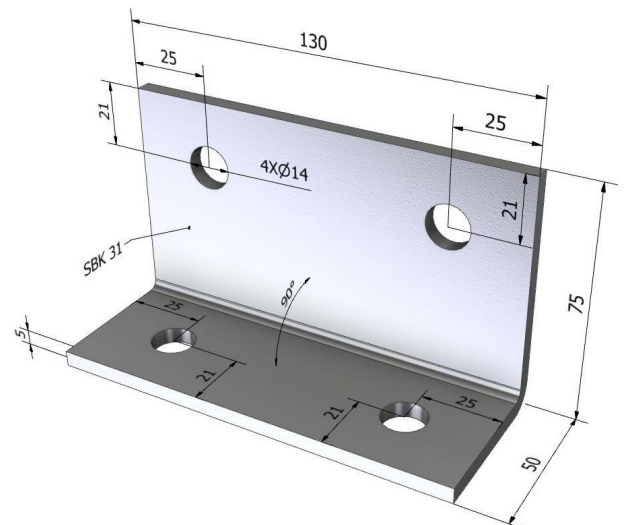
STEEL GRADE:	Stainless Steel 304
STEEL THICKNESS:	5mm
CORROSION PROTECTION:	Stainless Steel
FASTENER SIZE:	M12 BOLT OR SIMILAR

**SBK31\***

STEEL GRADE:	Grade 250
STEEL THICKNESS:	5mm
CORROSION PROTECTION:	HDG to AS/NZS 4680
FASTENER SIZE:	M12 BOLT OR SIMILAR

**SBK31/S\***

STEEL GRADE:	Stainless Steel 304
STEEL THICKNESS:	5mm
CORROSION PROTECTION:	Stainless Steel
FASTENER SIZE:	M12 BOLT OR SIMILAR



**NOTE:** The product marked with \* is no longer available

\*All dimensions shown are in "mm".

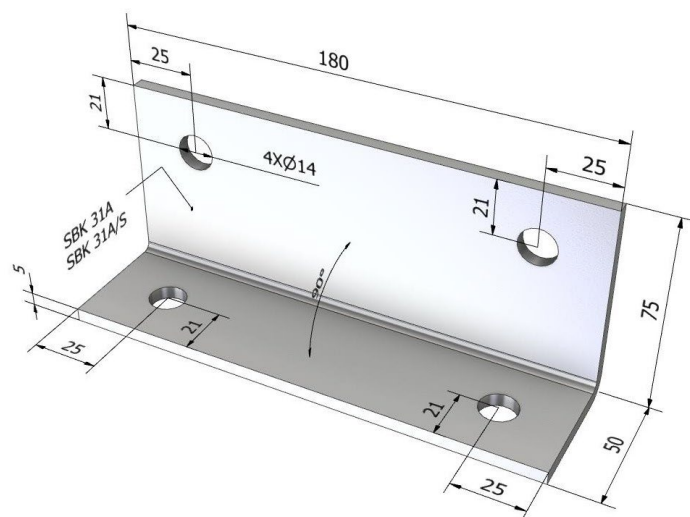


**SBK31A\***

STEEL GRADE:	Grade 250
STEEL THICKNESS:	5mm
CORROSION PROTECTION:	HDG to AS/NZS 4680
FASTENER SIZE:	M12 BOLT OR SIMILAR

**SBK31A/S\***

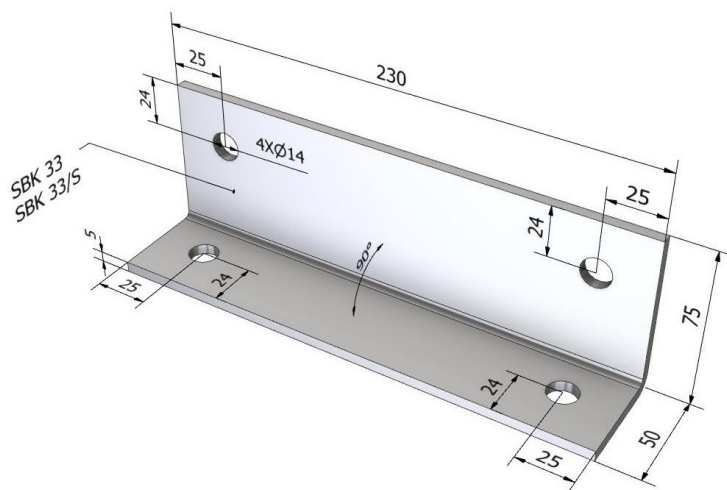
STEEL GRADE:	Stainless Steel 304
STEEL THICKNESS:	5mm
CORROSION PROTECTION:	Stainless Steel
FASTENER SIZE:	M12 BOLT OR SIMILAR

**SBK33\***

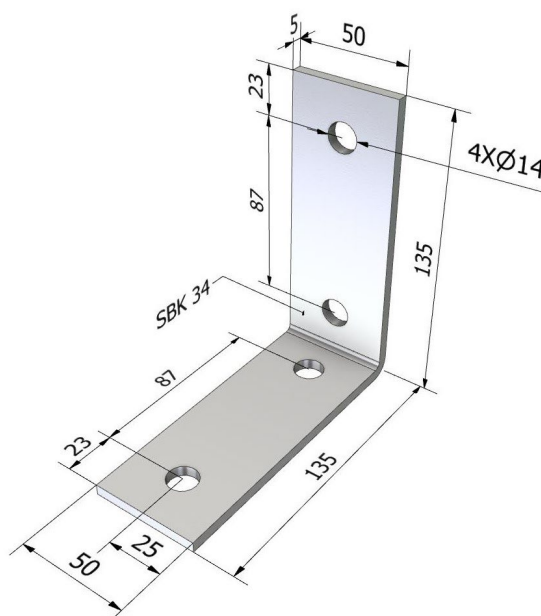
STEEL GRADE:	Grade 250
STEEL THICKNESS:	5mm
CORROSION PROTECTION:	HDG to AS/NZS 4680
FASTENER SIZE:	M12 BOLT OR SIMILAR

**SBK33/S\***

STEEL GRADE:	Stainless Steel 304
STEEL THICKNESS:	5mm
CORROSION PROTECTION:	Stainless Steel
FASTENER SIZE:	M12 BOLT OR SIMILAR

**SBK34\***

STEEL GRADE:	Grade 250
STEEL THICKNESS:	5mm
CORROSION PROTECTION:	HDG to AS/NZS 4680
FASTENER SIZE:	M12 BOLT OR SIMILAR



NOTE: The product marked with \* is no longer available

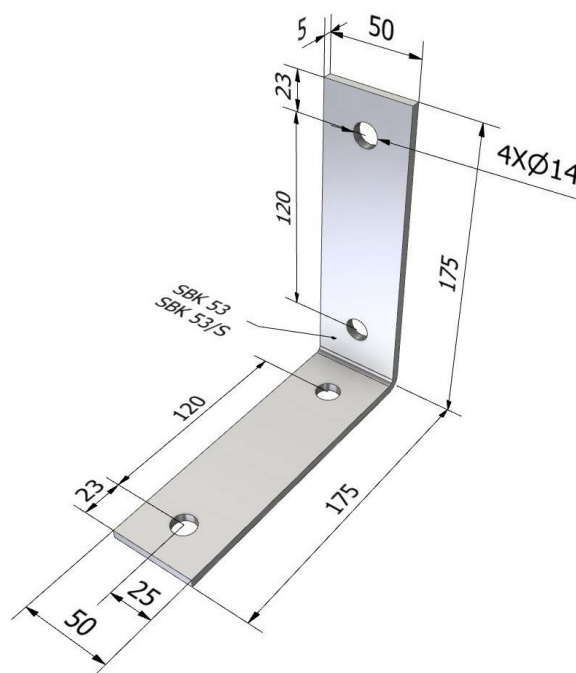
\*All dimensions shown are in "mm".

**SBK53\***

STEEL GRADE:	Grade 250
STEEL THICKNESS:	5mm
CORROSION PROTECTION:	HDG to AS/NZS 4680
FASTENER SIZE:	M12 BOLT OR SIMILAR

**SBK53/S\***

STEEL GRADE:	Stainless Steel 304
STEEL THICKNESS:	5mm
CORROSION PROTECTION:	Stainless Steel
FASTENER SIZE:	M12 BOLT OR SIMILAR



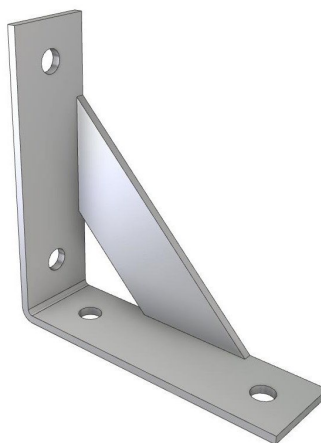
NOTE: The product marked with \* is no longer available

\*All dimensions shown are in "mm".

## ANGLE BRACKETS WITH GUSSET



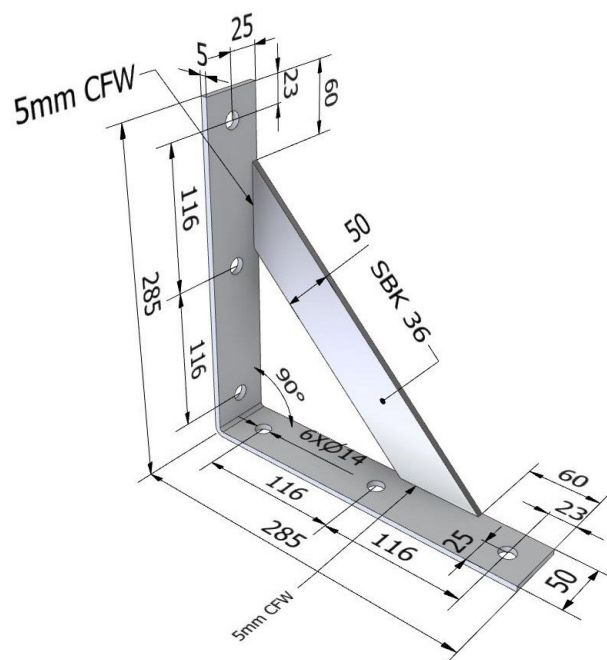
SBK 36\*



SBK 55\*

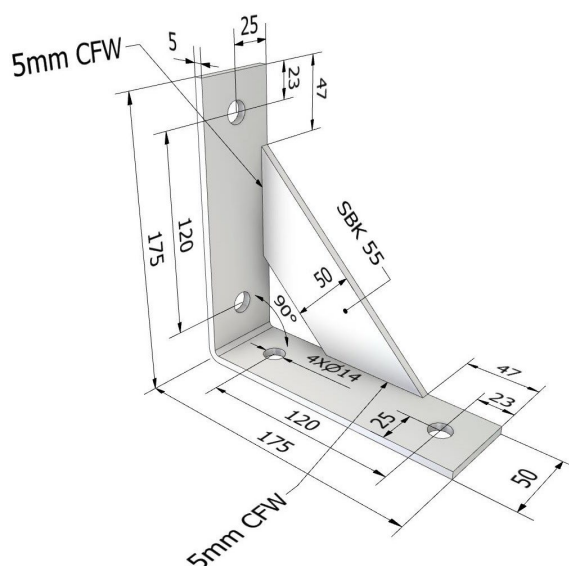
### SBK36\*

STEEL GRADE:	Grade 250
STEEL THICKNESS:	5mm
CORROSION PROTECTION:	HDG to AS/NZS 4680
WELD TO UNDERSIDE OF EACH BEARING PLATE	5mm CFW SP Category to AS/NZS 1554.1
FASTENER SIZE:	M12 BOLT OR SIMILAR



### SBK55\*

STEEL GRADE:	Grade 250
STEEL THICKNESS:	5mm
CORROSION PROTECTION:	HDG to AS/NZS 4680
FASTENER SIZE:	M12 BOLT OR SIMILAR



NOTE: The product marked with \* is no longer available

\*All dimensions shown are in "mm".

## BEAM SUPPORTS



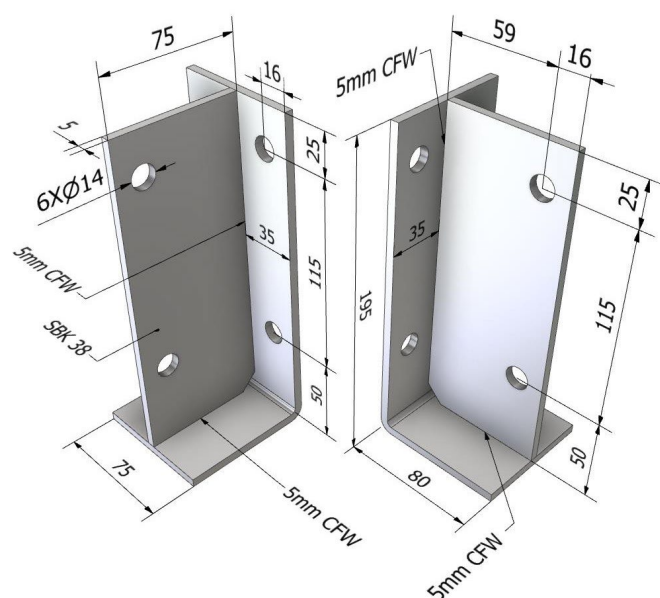
**SBK 38\***



**SBK 38A\***

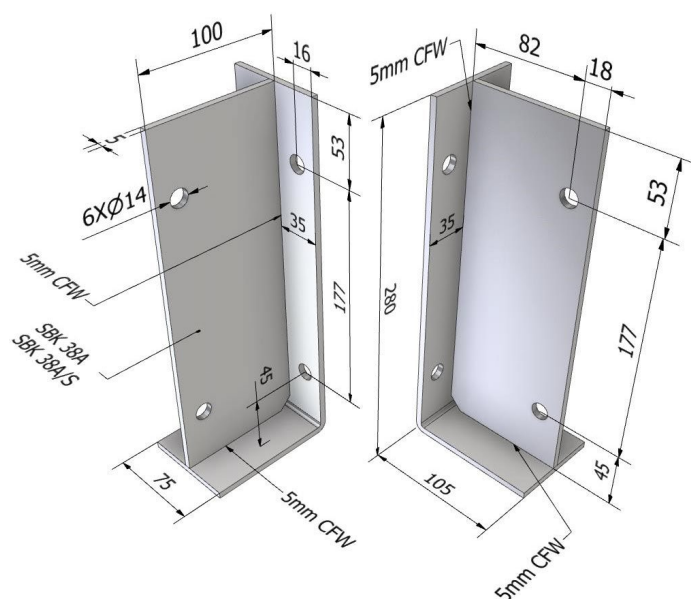
### **SBK38\***

STEEL GRADE:	Grade 250
STEEL THICKNESS:	5mm
CORROSION PROTECTION:	HDG to AS/NZS 4680
WELD TO UNDERSIDE OF EACH BEARING PLATE	5mm CFW SP Category to AS/NZS 1554.1
FASTENER SIZE:	M12 BOLT OR SIMILAR



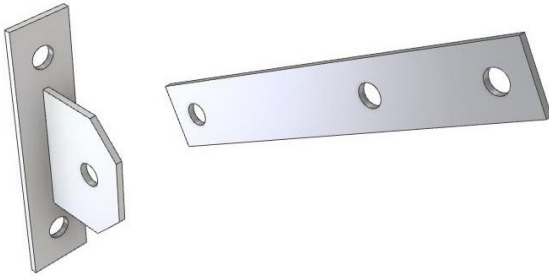
### **SBK38A/S\***

STEEL GRADE:	Stainless Steel 304
STEEL THICKNESS:	5mm
CORROSION PROTECTION:	Stainless Steel
FASTENER SIZE:	M12 BOLT OR SIMILAR



**NOTE:** The product marked with \* is no longer available

## POLE BRACE BRACKET

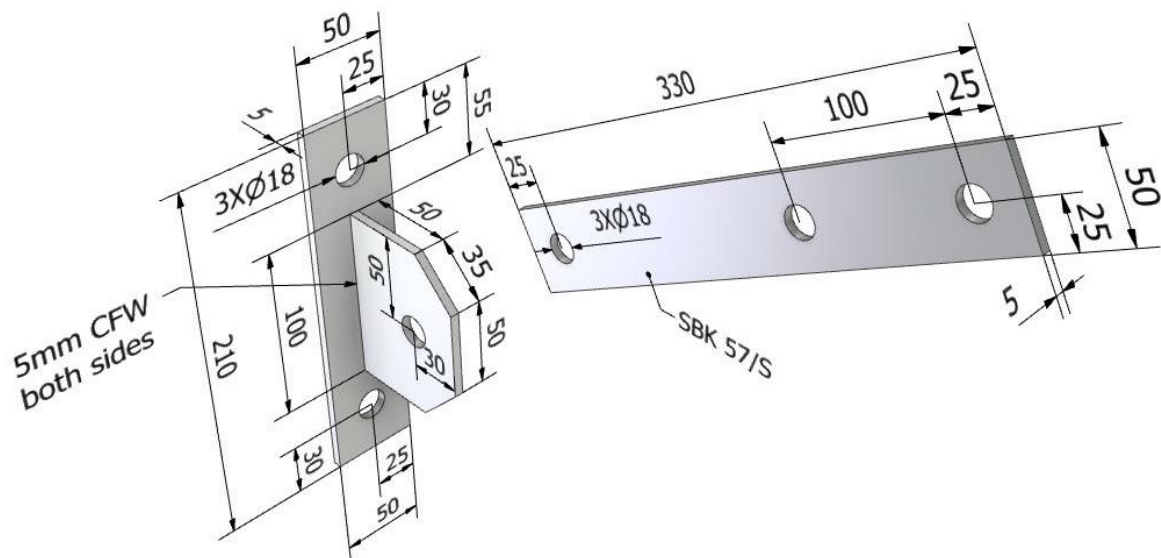


SBK 57/S\*

### SBK57/S\*

STEEL GRADE:	Stainless Steel 304
STEEL THICKNESS:	5mm
CORROSION PROTECTION:	Stainless Steel
FASTENER SIZE:	M16 BOLT OR SIMILAR

NOTE: The product marked with \* is no longer available



\*All dimensions shown are in "mm".

## POST AND BEARER SUPPORTS



SBK 4\*  
SBK 4/S\*



SBK 6\*  
SBK 6/S\*



SBK 8\*  
SBK 8/S\*



SBK 9\*



SBK 18\*

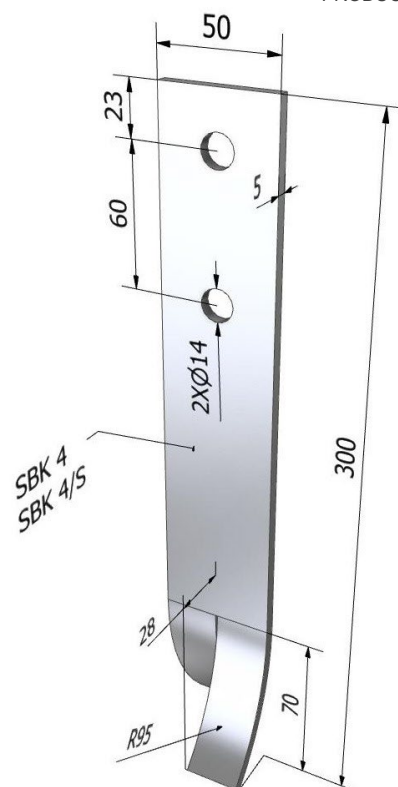
NOTE: The product marked with \* is no longer available

**SBK4\***

STEEL GRADE:	Grade 250
STEEL THICKNESS:	5mm
CORROSION PROTECTION:	HDG to AS/NZS 4680
FASTENER SIZE:	M12 BOLT OR SIMILAR

**SBK4/S\***

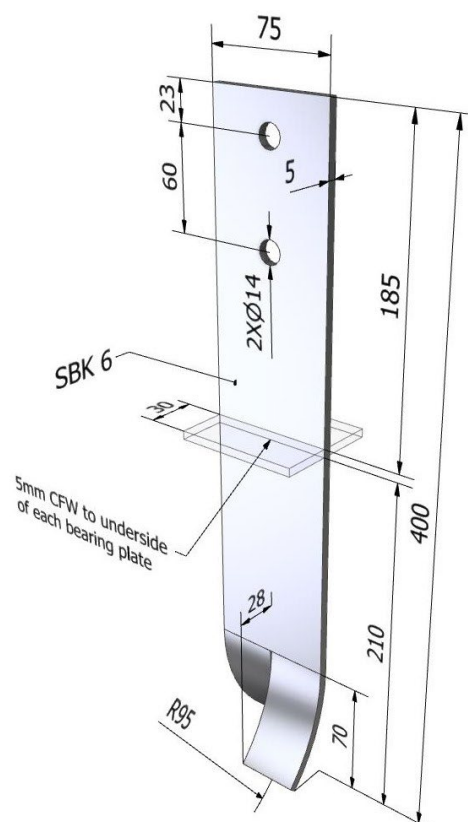
STEEL GRADE:	Stainless Steel 304
STEEL THICKNESS:	5mm
CORROSION PROTECTION:	Stainless Steel
FASTENER SIZE:	M12 BOLT OR SIMILAR

**SBK6\***

STEEL GRADE:	Grade 250
STEEL THICKNESS:	5mm
CORROSION PROTECTION:	HDG to AS/NZS 4680
WELD TO UNDERSIDE OF EACH BEARING PLATE	5mm CFW SP Category to AS/NZS 1554.1
FASTENER SIZE:	M12 BOLT OR SIMILAR

**SBK6/S\***

STEEL GRADE:	Stainless Steel 304
STEEL THICKNESS:	5mm
CORROSION PROTECTION:	Stainless Steel
FASTENER SIZE:	M12 BOLT OR SIMILAR



**NOTE:** The product marked with \* is no longer available

\*All dimensions shown are in "mm".

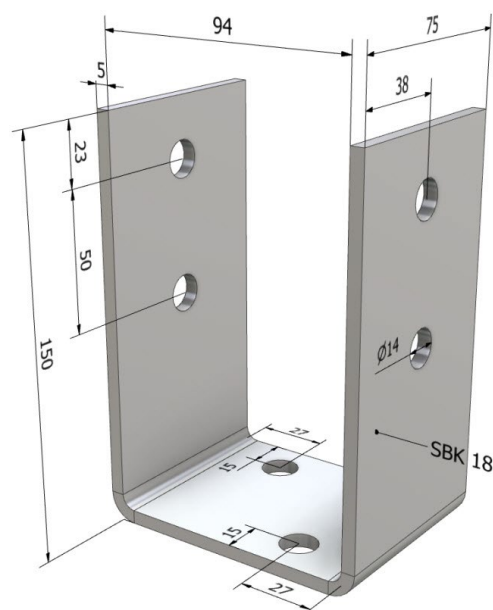






**SBK18\***

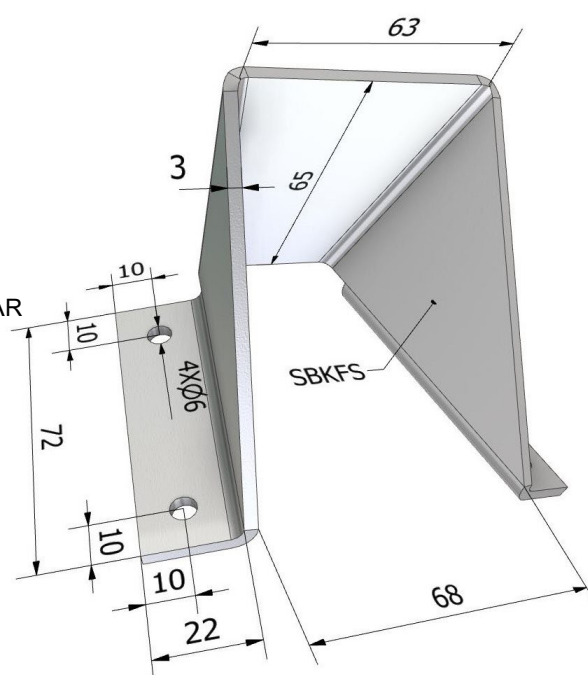
STEEL GRADE:	Grade 250
STEEL THICKNESS:	5mm
CORROSION PROTECTION:	HDG to AS/NZS 4680
FASTENER SIZE:	M12 BOLT OR SIMILAR



\*All dimensions shown are in "mm".

**FENCE STAY BRACKET****SBKFS\*****SBKFS\***

STEEL GRADE:	Grade 250
STEEL THICKNESS:	3mm
CORROSION PROTECTION:	HDG to AS/NZS 4680
FASTENER SIZE:	NO.12 GAUGE SCREW OR SIMILAR



**NOTE:** The product marked with \* is no longer available

\*All dimensions shown are in "mm".

Contact Details	
Manufacture location	Overseas
Legal and trading name of manufacturer	Wigley Engineering PTY LTD
Legal and trading name of importer	Pryda New Zealand -a Division of ITW New Zealand
Importer address for service	23-29 Poland Road, Wairau Valley, Auckland, 0627, New Zealand
Importer website	pryda.co.nz
Importer email	<a href="mailto:info@prydaanz.com">info@prydaanz.com</a>
Importer phone number	0800 88 22 44
Importer NZBN	9429039833129
Product Skus	SBK27, SK27/S, SBK29, SBK29/S, SBK30, SBK23, SBK23/S, SBK25, SBK25/S

Contact Details	
Manufacture location	New Zealand
Legal and trading name of manufacturer	Kimberly Tool & Design (NZ) Limited
Legal and trading name of importer	Pryda New Zealand -a Division of ITW New Zealand
Importer address for service	23-29 Poland Road, Wairau Valley, Auckland, 0627, New Zealand
Importer website	pryda.co.nz
Importer email	<a href="mailto:info@prydaanz.com">info@prydaanz.com</a>
Importer phone number	0800 88 22 44
Importer NZBN	9429039833129
Product Skus	SBK10A, SBK10A/S, SBK14, SBK14A/S, SBK31, SBK31/S, 34, SBK5SBK31A, SBK31A/S, SBK33, SBK33/S, SBK34, SBK53, SBK53/S, SBK36, SBK55, SBK38, SBK38A/S, SBK57/S, SBK4, SBK4/S, SBK6, SBK6/S, SBK8, SBK8/S, SBK9, SBK18, SBKFS