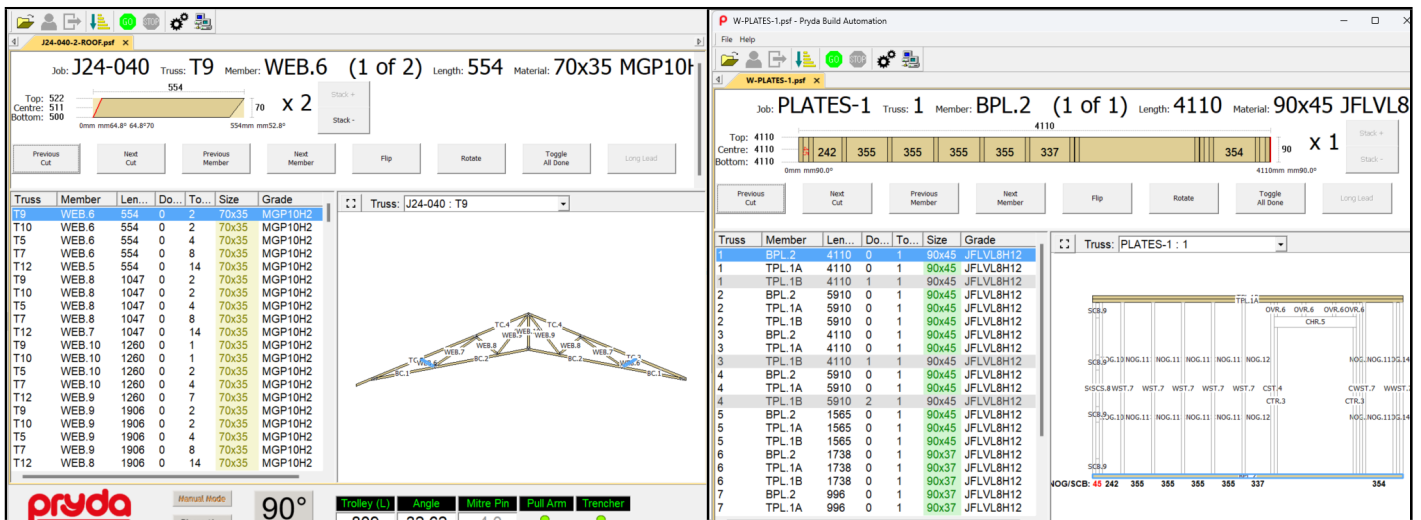


# PRYDA BUILD AUTOMATION

Roof	<input type="checkbox"/>
Wall	<input checked="" type="checkbox"/>
Floor	<input type="checkbox"/>
Sawing	<input checked="" type="checkbox"/>
Timber Joining	<input type="checkbox"/>
Production Tools	<input type="checkbox"/>



- Touchscreen/Industrial PC
- Windows Operating System
- Direct feedback to Pryda's Production manager
- Full diagnostics screen
- Remote access by Pryda Fabricator Equipment Technicians
- Ability to mark truss boot locations on your bottom chord members
- Ability to have multiple jobs open at Once

## PRYDA BUILD AUTOMATION

Pryda Build Automation (PBA) was developed directly with frame and truss businesses to remove aging automation throughout their frame and truss manufacturing facilities.

PBA allows equipment with outdated electrical cabinets along with obsolete Microsoft operating systems to continue to thrive in a competitive market.

## PBA SYSTEMS CAN BE SUPPLIED IN MULTIPLE CONFIGURATIONS

Upgrade an existing system	Pryda supplied new system
<p>Existing automated saw, PBA can be replaced on the following existing automation systems which may already exist within your business.</p> <ul style="list-style-type: none"> <li>• Mango automation</li> <li>• Spida Automation</li> <li>• Fruit bat automation</li> <li>• Vector automation</li> </ul>	<p>Saw configuration</p> <ul style="list-style-type: none"> <li>• Angulation saws</li> <li>• Docking saw</li> <li>• Trenching saw/Combination saw</li> <li>• Manual plate marking system</li> </ul>
<p>Existing Plate Progressor system, PBA can be placed on the following existing automation systems</p> <ul style="list-style-type: none"> <li>• Spida automation</li> <li>• Mango automation</li> </ul>	<p>Plate Progressor system Nog cutting saw Sub component cutting system</p>
<b>Power</b>	3 Phase 20 amp
<b>Weight</b>	50kg (Electrical Cabinet, Pedstal and associated cables)

## RELATED EQUIPMENT

- Pryda Sub Component Nailer
- Pryda Wall Framer

## RELATED PRODUCTS

- Angulated Saws
- Popup Saws